

Indirect Visibility Safety Research for Heavy Vehicles

May 13th, 2009

Conducted by:

Center for Truck and Bus
Research (CTBS)

Prepared by:

- **Andy Schaudt**



Sponsored by:

*National Highway Traffic Safety Administration &
Federal Motor Carrier Safety Administration*

DTNH22-05-D-01019, Task Order # 5, 6, & 23 TOM: Dr. Paul Rau

Acknowledgments

- The research reported here was funded by the National Highway Traffic Safety Administration (NHTSA) and the Federal Motor Carrier Safety Administration (FMCSA)
- **Dr. Paul Rau** (NHTSA), **Amy Houser** (FMCSA), and **Chris Flanigan** (FMCSA) were/are the Task Order Managers
- VTTI staff **Rich Hanowski**, **Walt Wierwille**, **Andy Alden**, **Greg Fitch**, and **Myra Blanco** were other key researchers in this program



National Highway Traffic Safety Administration
Our Mission: Save lives, prevent injuries, reduce vehicle-related crashes



Background

- Large trucks involved in over 28,000 lane change/merge crashes between April 2001 – December 2003 (*Starnes, 2006*).
- Data from crash data base studies and naturalistic studies indicate lane change/merge crashes to be a big problem, particularly between light vehicles and heavy vehicles
- Camera/Video Imaging Systems (C/VISs) are becoming more prevalent on heavy vehicles

Indirect Visibility Safety Research

- Three research phases in this program
 1. Development of a Performance Specification for Indirect Visibility Systems on Heavy Trucks
 2. Enhanced Camera/Video Imaging Systems (E-C/VISs) for Heavy Trucks
 3. Field Demonstration of an Advanced Heavy Vehicle Indirect Visibility System

Camera/Video Imaging Systems

- Enhancements & Surrogates
- Daytime
- Highway and Backing Tasks
- Investigated 9 Configurations

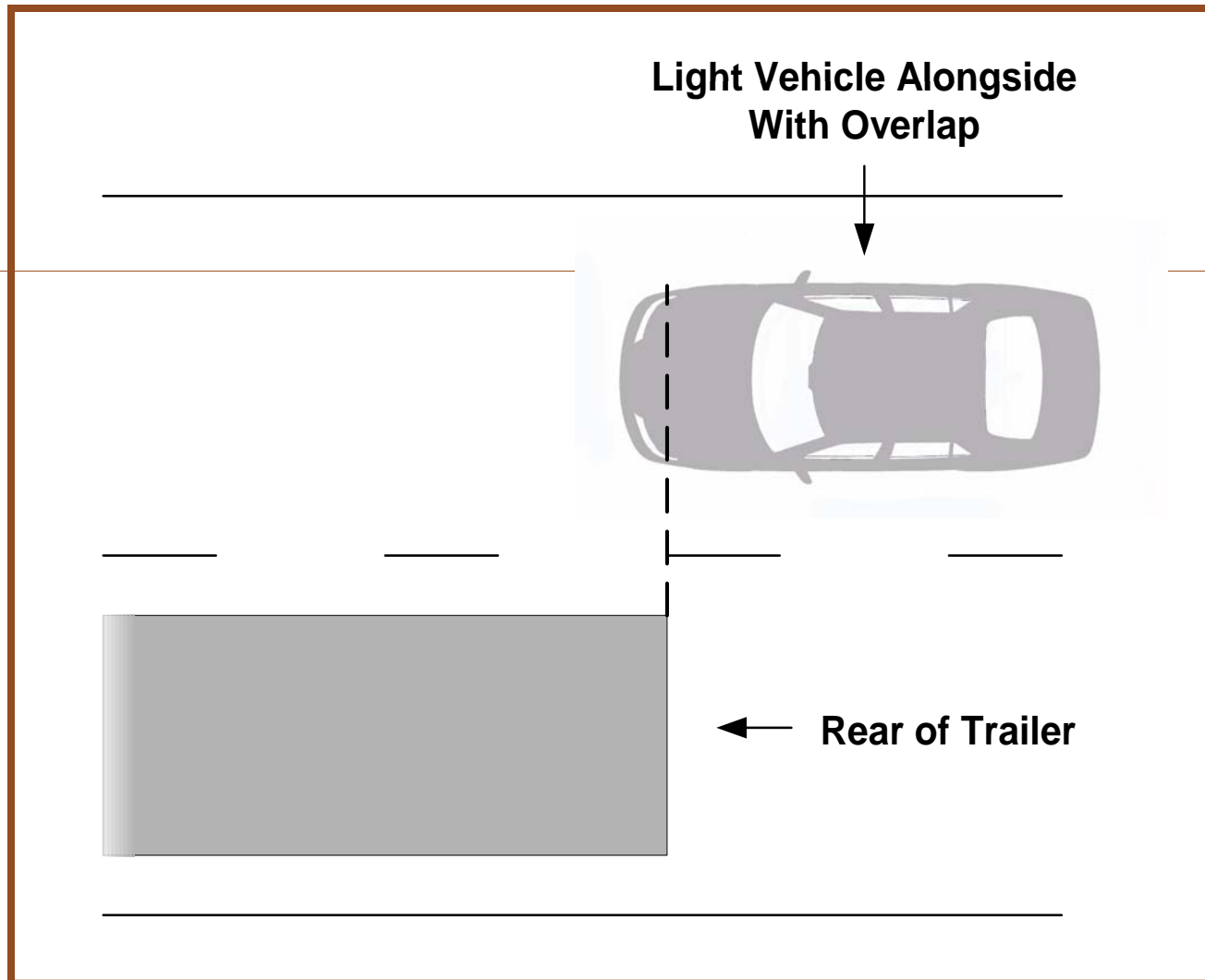


VTTI

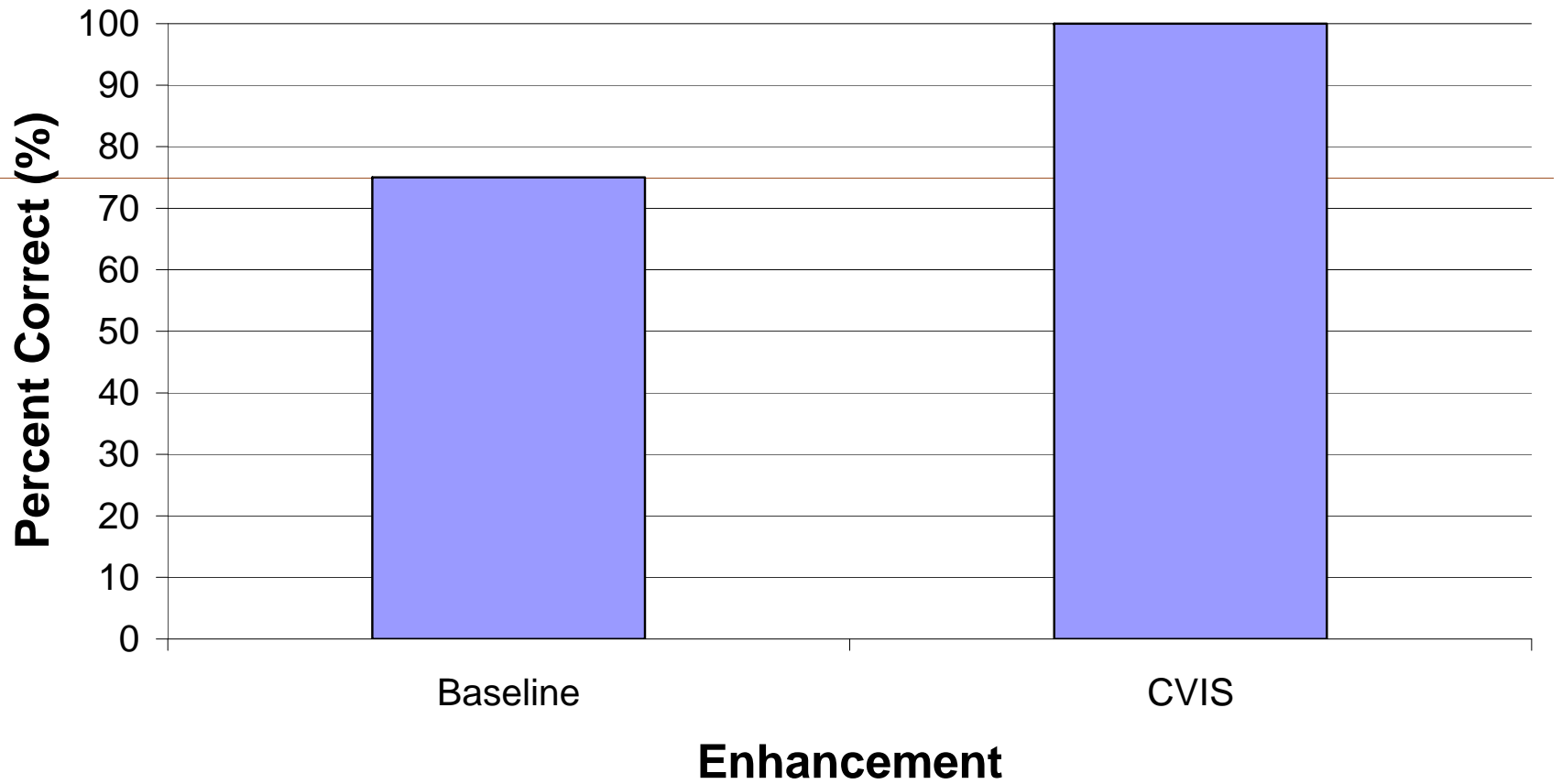
Driving Transportation with Technology



Highway Task



Clearance/Overlap Task

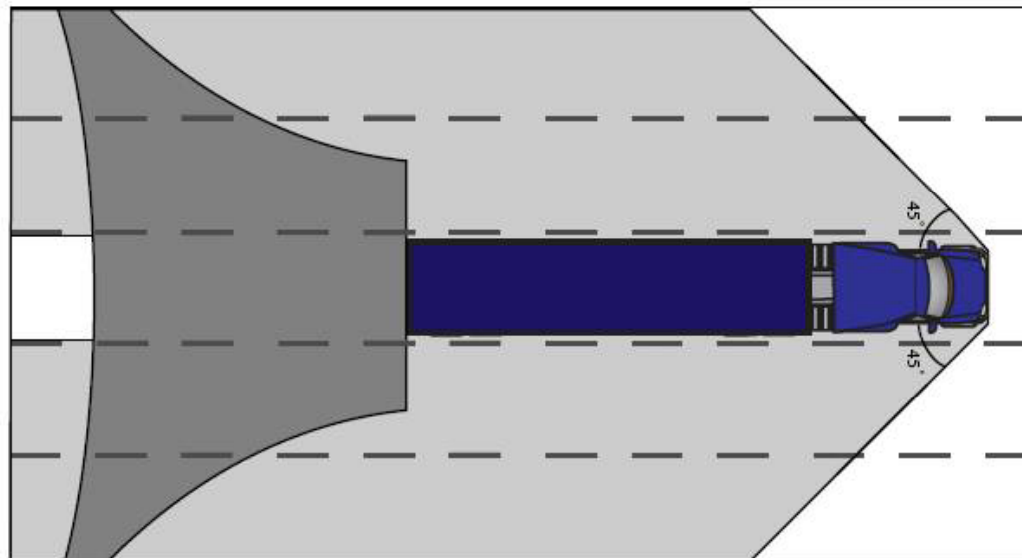


Summary

- Great promise for the enhancements tested and show that surrogates are by-and-large capable of competing with mirrors
- Enhancements generally provided improvements
- Convex C/VISs can be recommended without hesitation because they are capable of producing results similar to actual convex mirrors
- Systems were well-accepted and received high ratings

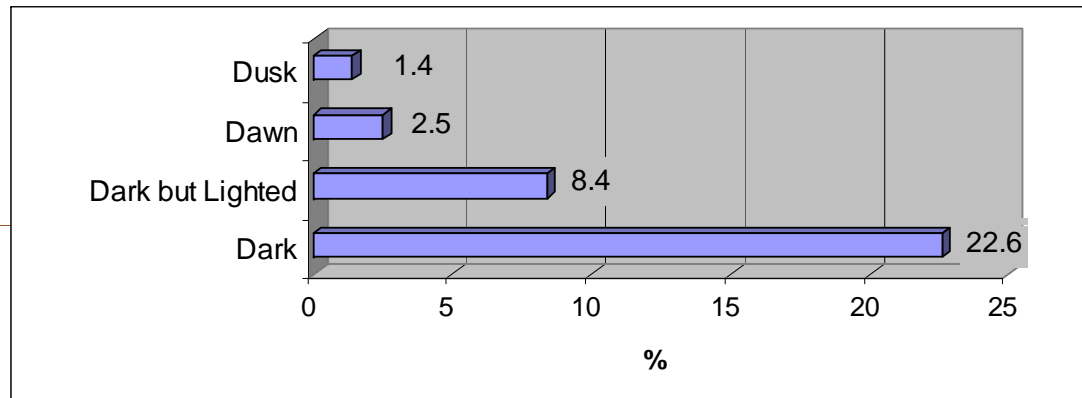
Enhanced Camera/Video Imaging Systems

- Objective: Better visibility and better situation awareness for heavy vehicle drivers, along sides and to the rear, using Enhanced Camera/Video Imaging systems. Emphasis on nighttime and inclement weather.

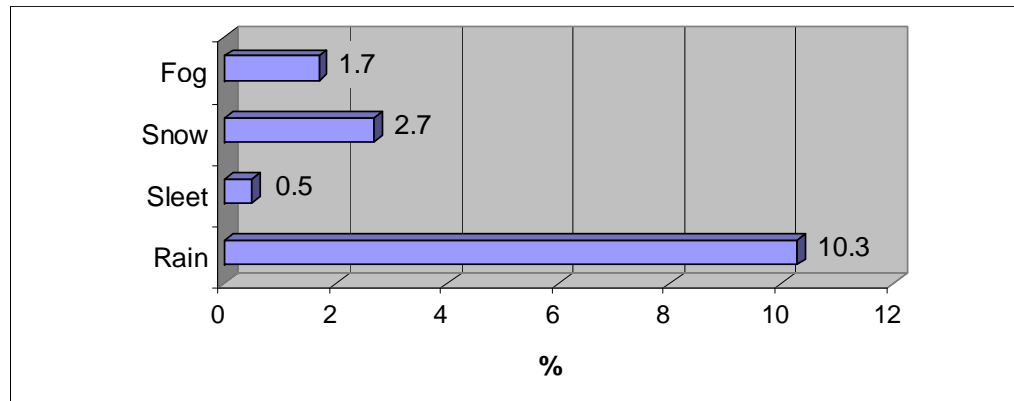


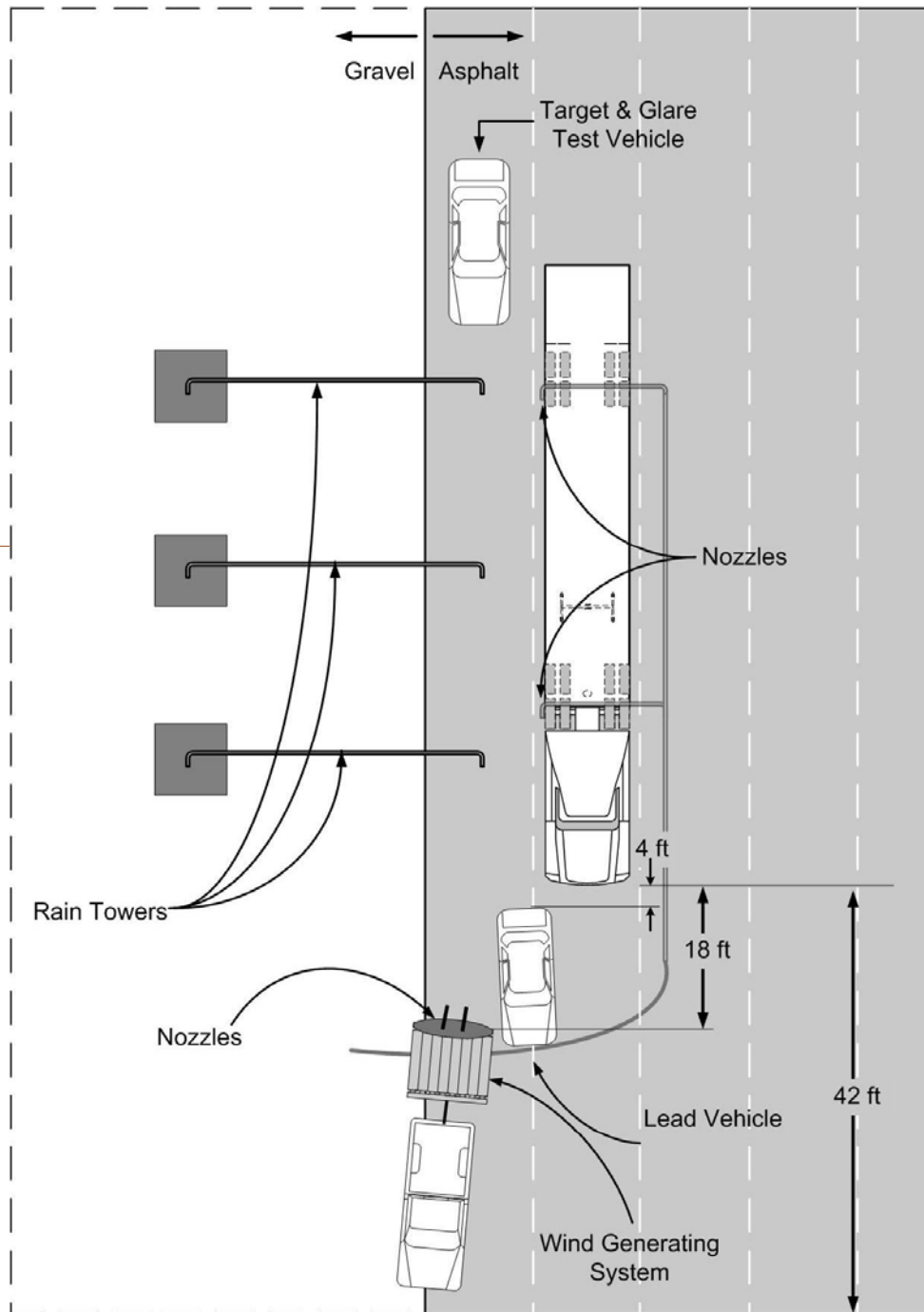
Nighttime and Inclement Weather?

- Nearly 35% during low ambient light conditions



- 15.2% during inclement weather





Static Testing

Outdoor Facility Video

VTTI

Driving Transportation with Technology



Static Tests

**Illuminator Mounting
Positions
and Camera Placement**



Dynamic Testing

VTTI

Driving Transportation with Technology



VTTI

Driving Transportation with Technology

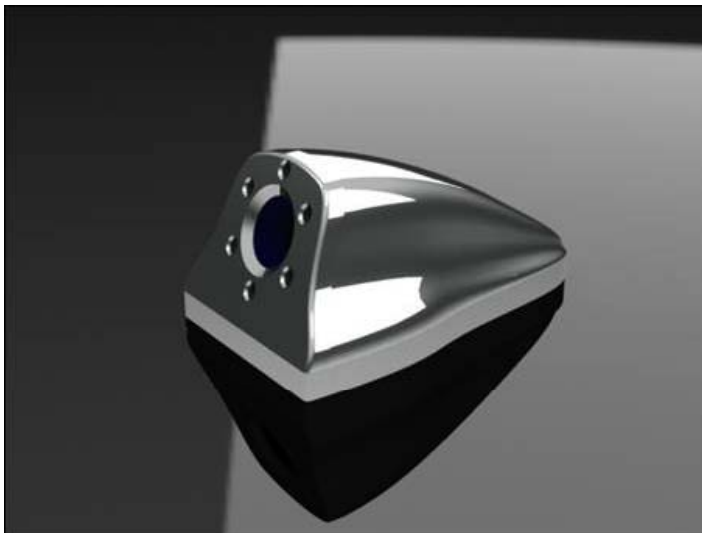


Summary

- A three-channel E-C/VIS is feasible.
- Rear camera should be a wide-angle multipurpose look-down camera.
- System operates from total darkness (B/W) to bright daylight (color).
- IR illuminators work well at night for dark objects, 940nm.
- Cameras must be capable of switching from B/W to color, must be sensitive to near IR.
- Image processing producing outlines of objects is helpful.
- All performance, eye glance, and ratings data appear promising

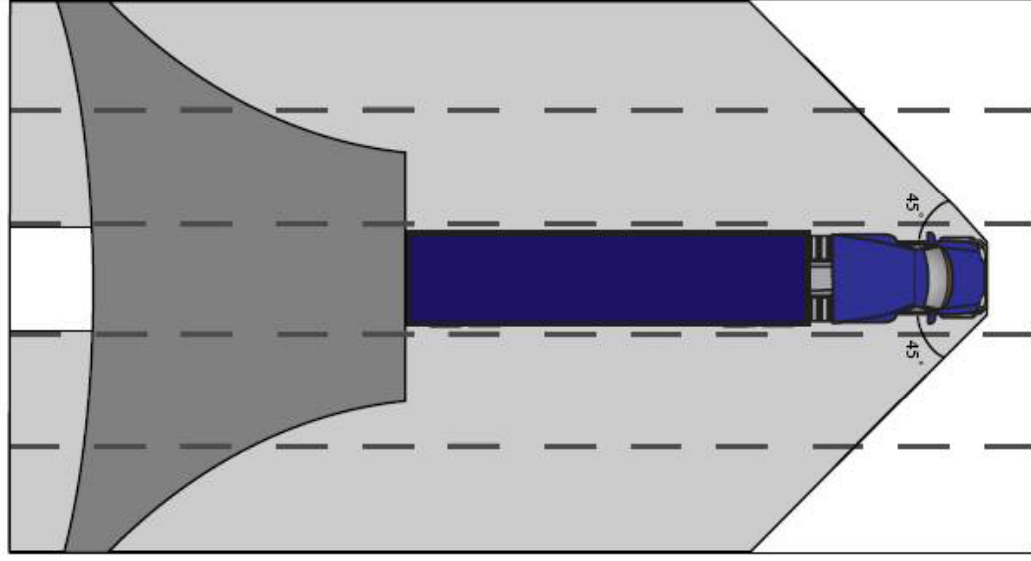
Field Demonstration of an Advanced Camera/Video Imaging System

Assess safety and driver performance benefits of enhancing the west coast style mirrors with an Advanced Camera/Video Imaging System (A-C/VIS) in a real-world, revenue producing, driving environment



VTTI

Driving Transportation with Technology



Project Goals

- Identify and evaluate a commercially available system and compare with baseline
- Develop and evaluate an A-C/VIS and compare to baseline
 - Approximate the performance specs developed in previous phases
 - Smaller, weatherproof camera assemblies with anti-bloom technology
 - In-line machine vision processing modules
 - IR illumination from tractor and trailer
 - DVI for control of display brightness and processing level
- Showcase the technology in a field demo

Method Highlights

- Independent Variables
 - System Type: Commercial System, A-C/VIS
 - Condition: Displays Off - Baseline (4 wks), Displays On (12 wks)

- Study Implementation
 - 6 vehicle (3 per system type): Married tractor and trailer
 - 12 CDL-A drivers (6 per system type)
 - Daily out-and-back drivers

Reduce and Analyze Data

- Identify the number of safety critical events (SCE)
 - Sample eye glance
- Characterize LCs performed w/wo systems
 - Identify 1000 lane changes (500 w, 500 wo)

- Single Vehicle Lane Change Behavior
 - Duration, direction, type, turn signal use
- Other Vehicle Behavior
 - Distance, approach rate, location, type
- Environmental Variables
- Sample eye glance
- Driver Ratings

Timeline

- 30 months
- Started in August, 2008



Thank You!!



aschaudt@vtti.vt.edu